

RYDER SUBSTATION FLORIDA POWER & LIGHT COMPANY RE-PLAT

BEING A RE-PLAT OF TRACT B, RYDER SUBSTATION FLORIDA POWER & LIGHT COMPANY
(PLAT BOOK 95, PAGE 63, PUBLIC RECORDS OF PALM BEACH COUNTY)
SECTION 05-42S-42E, CITY OF PALM BEACH GARDENS, PALM BEACH COUNTY, FLORIDA
MARCH, 2023

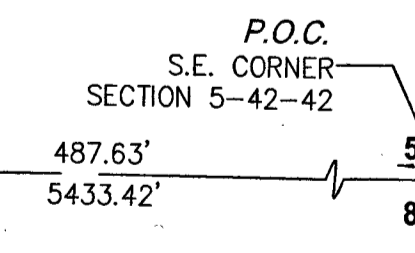
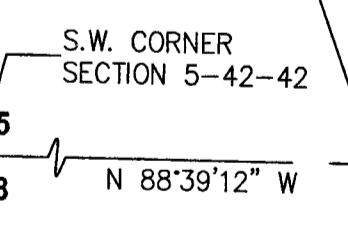
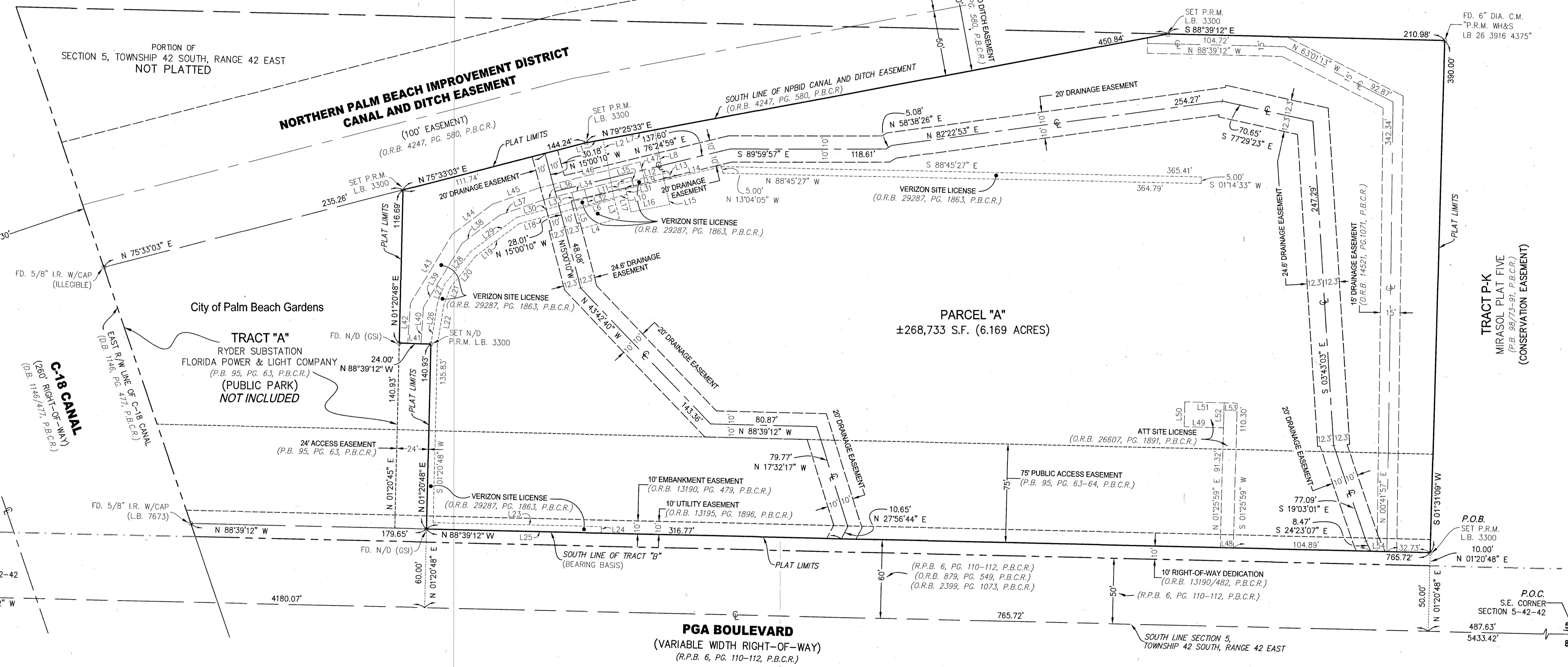
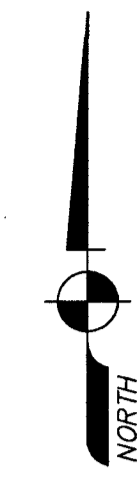
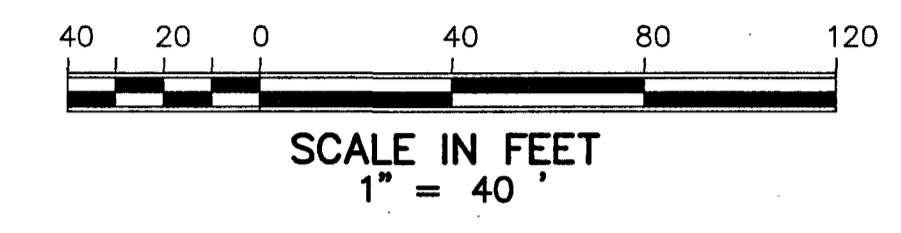
172

STATE OF FLORIDA
COUNTY OF PALM BEACH
This plat was filed for record
at _____ this _____
day of _____, 2023,
and duly recorded in Plat Book
_____ Pages _____, through
_____.

JOSEPH ABRUZZO
Clerk and Comptroller
By: _____ D.C.

SHEET 2 OF 2

LINE	BEARING	DISTANCE	LINE	BEARING	DISTANCE
L1	N 79°25'33" E	13.36'	L28	N 38°39'31" E	31.97'
L2	S 10°34'30" E	46.11'	L29	N 53°31'35" E	43.58'
L3	S 15°13'59" E	15.00'	L30	N 74°48'01" E	85.99'
L4	S 74°46'01" W	30.00'	L31	S 13°04'05" E	5.08'
L5	N 15°13'59" W	15.00'	L32	S 15°13'59" E	13.24'
L6	N 74°46'01" E	30.00'	L33	N 15°13'59" W	13.38'
L7	N 79°25'33" E	39.94'	L34	N 75°33'56" E	10.00'
L8	S 10°34'27" E	38.90'	L35	N 13°04'05" W	7.89'
L9	N 76°55'55" E	30.00'	L36	S 75°33'56" W	68.93'
L10	S 74°46'01" W	5.00'	L37	S 70°44'39" W	35.93'
L11	N 13°04'05" W	5.19'	L38	S 53°22'38" W	35.69'
L12	N 76°55'55" E	40.00'	L39	S 31°08'21" W	57.01'
L13	S 13°04'05" E	5.00'	L40	S 03°52'35" W	27.85'
L14	N 76°55'55" E	40.42'	L41	N 88°39'12" W	10.01'
L15	S 13°04'05" E	19.00'	L42	N 03°52'35" E	30.72'
L16	S 78°55'55" W	30.00'	L43	N 31°08'21" E	61.40'
L17	N 13°04'05" W	13.92'	L44	N 53°22'38" E	38.18'
L18	S 74°46'01" W	85.19'	L45	N 70°44'39" E	37.46'
L19	S 53°31'35" W	41.64'	L46	N 75°32'18" E	80.02'
L20	S 38°39'31" W	30.51'	L47	S 13°04'05" E	18.13'
L21	S 20°24'59" W	14.43'	L48	N 88°39'12" W	10.00'
L22	S 09°15'39" W	30.42'	L49	N 88°34'01" W	30.00'
L23	S 88°39'12" E	128.53'	L50	N 01°25'59" E	19.00'
L24	S 01°20'48" W	5.00'	L51	S 88°34'01" E	30.00'
L25	N 88°39'12" W	133.53'	L52	S 01°25'59" W	19.00'
L26	N 09°15'39" E	31.25'	L53	S 88°34'01" E	10.00'
L27	N 20°24'59" E	15.72'	L54	N 88°39'12" W	12.30'



THIS INSTRUMENT WAS PREPARED BY:
KEITH M. CHEE-A-TOW, P.L.S.
AVIROM & ASSOCIATES, INC.
SURVEYING & MAPPING
50 S.W. 2nd AVENUE, SUITE 102
BOCA RATON, FLORIDA 33432
(561) 392-2594
MARCH, 2023

SYMBOL LEGEND:
 ● DENOTES SET PERMANENT REFERENCE MONUMENT, A NAIL WITH A BRASS DISK STAMPED "L.B. #3300, P.R.M."
 □ DENOTES SET PERMANENT REFERENCE MONUMENT, A 4" ROUND REINFORCED CONCRETE MONUMENT WITH AN ALUMINUM DISK STAMPED "L.B. #3300, P.R.M."